

Lighting Spec:
Ballyduff Community Council.
St. Michaels Hall.

Dimmers:

36 ways of 10amp Dimming on Dual 16 Sockets to 96 ways of house patch (see attached plan)

97 ways Lighting Circuits all on 16A sockets.

Control:

Zero88 Fat Frog DMX desk / with Screen and keyboard.
Manual @ [www. Zero88.com](http://www.Zero88.com)

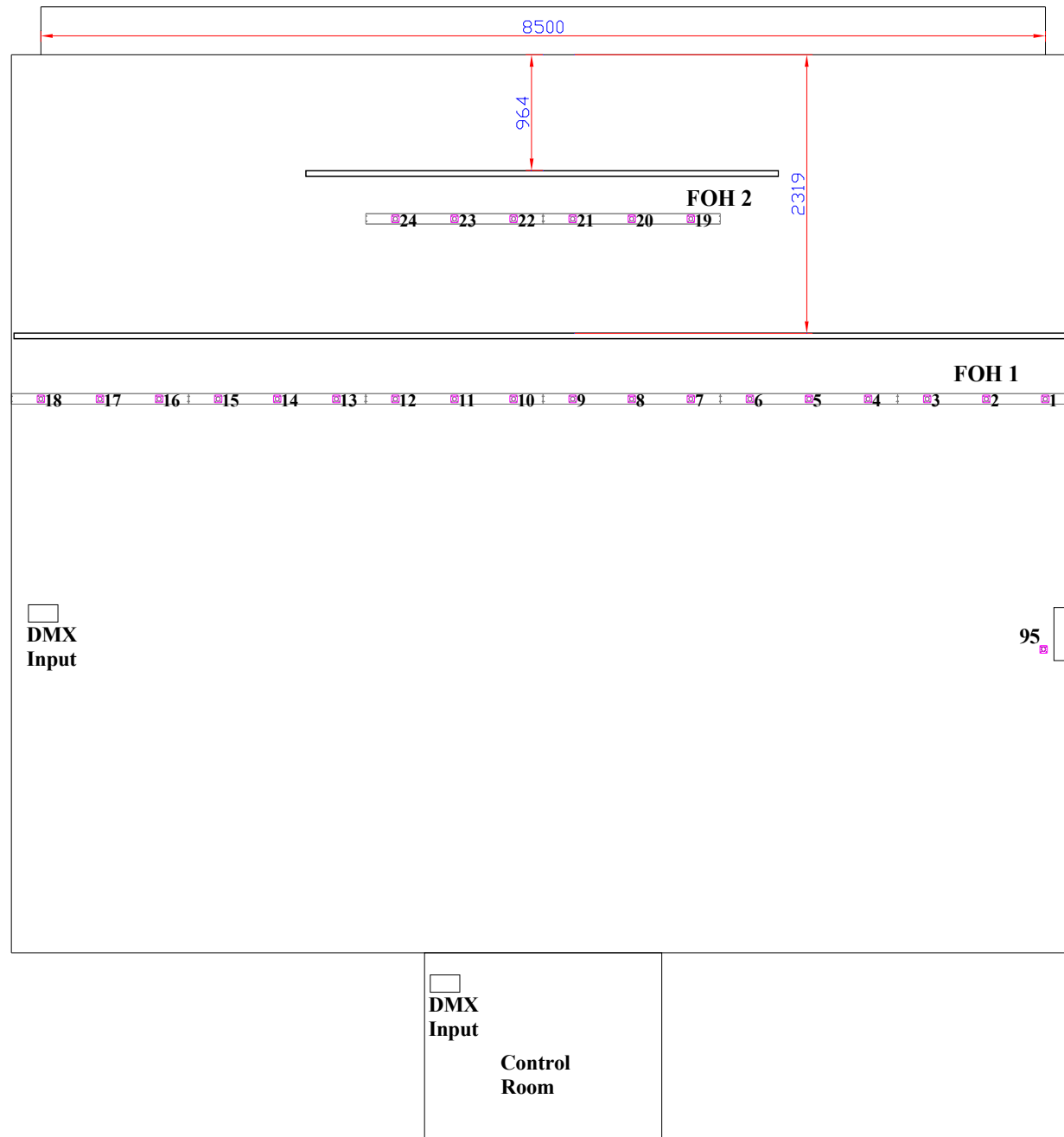
Lamps:

12 x Par 64 (CP 62) Par cans
12 x Strand 1000 w Coda Cyc Floods
12 x Strand Quartet Fresnel C/w Barn Door
8 x Strand Cantata 1000w fresnel C/w Barn door
8 x Strand SL 15 – 32 600w Profiles
4 x Strand SL 25 – 50 600w Profiles

4 x Chroma Q 1D scrollers to fit Par 64 OR Cantata Fresnel
2 x Chroma Q Broadway to fit strand SL.

Please note:

There is a small switch on the Auditorium DMX input.
Switched forward towards stage connects the auditorium DMX input
Switched back towards the control room enabled the Control Room Input.



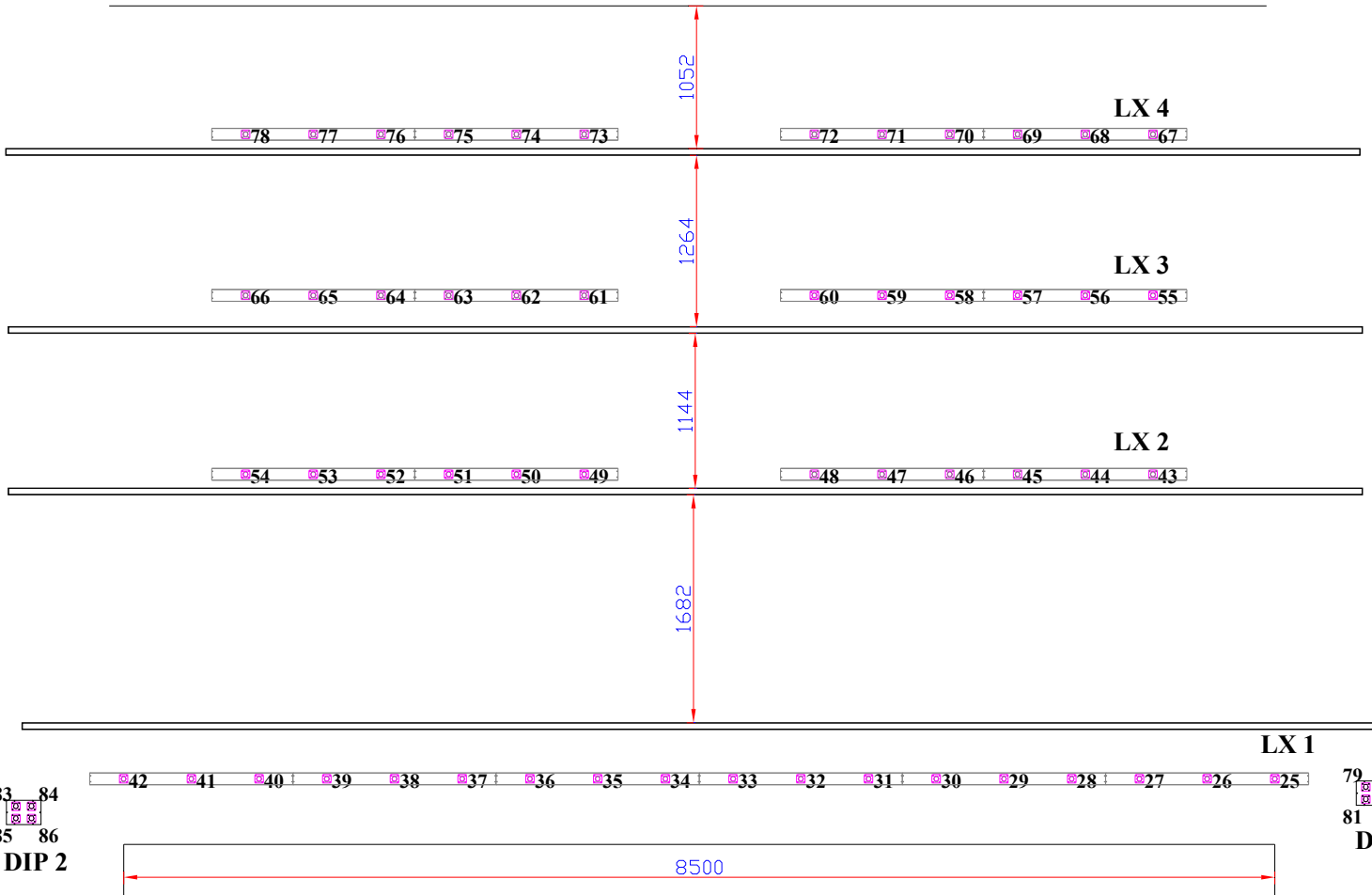
DIP 3

87 88
89 90

CYC CLOTH

DIP 4

81 92
93 94



83 84
85 86
DIP 2

79 80
81 82
DIP 1